

Driver Access Control

- Improve Site Safety
- Prevent Unauthorised Operation
- Encourage Driver Ownership
- Reduce Idle Time and Fuel Costs
- Reduce Overall Cost of Ownership

Controlling the operation of fork lift trucks is critical to operational safety. The TRUCKLOG® electronic driver access control system is an effective means of assigning driver accountability for particular trucks, dramatically saving money in damage costs to fleet vehicles, infrastructure and products.

The TRUCKLOG® Driver Access Control system delivers flexible driver access control for defined drivers and departments. The system's truck-mounted device can be integrated at the time of original manufacture or later as a plug-in installation.

SMART CARD OR KEY PAD?

There are two types of control interface modules, which can be mounted to the truck to achieve driver log on - a Smart Card reader or digital key pad. Both control modules ensure drivers are made accountable, thereby improving their driving standards.

COMMON ACCESS CONTROL FEATURES

- Smart Card or PIN code log on
- Engineer vehicle off road (VOR) control
- 1-254 minutes idle time-out facility, saving fuel and battery power, also preventing unauthorised persons driving the unattended vehicle
- Compact, robust unit, sealed for use in harsh indoor and outdoor conditions, including wet and dusty atmospheres
- Plug in installation
- LED indicator to show status of module i.e. logged on, out of use, etc
- System can be expanded with full data logging functions
- Cold Store version available

SMART CARD FEATURES

- Unique Smart Card authorisation (key fob option also available)
- Up to 99,999 unique Smart Card ID PIN numbers in any system
- Configure each card with driver name, up to 16 truck types and 14 departments
- Simple programmable Smart Cards using a Smart Card Allocator connected to a computer running Administration Software
- Report recent driver log ons using a Data Retrieval Wand or Supervisor's Smart Card to retrieve data from truck-mounted unit
- On truck 'damage/no damage' pre-operational check and log on (see overleaf)

PIN CODE FEATURES

- Unique 5 digit PIN code authorisation
- 226 PIN memory that can be programmed for drivers, supervisors or engineers
- Individual PIN numbers can be entered or deleted via key pad



OPTIONAL MULTIFUNCTION SMART CARD

The Access Control Electronic Drivers Licence Card can be integrated in to single multifunction card, which integrates with existing access, time and attendance, and cashless vending systems.

The use of multifunction Smart Card technology is the most reliable form of driver access as it encourages a stronger sense of ownership and responsibility and drivers are typically more likely to safeguard their card when they also use it as an electronic purse.



DAMAGE/NO DAMAGE LOG ON

The Smart Card Access Control Module has a Damage/No Damage driver log on function. This facility allows drivers to log on according to the damage state of the truck once they have carried out a pre-drive visual inspection. If they observe damage to the truck, they should log on using the red button. If there is no obvious damage, they should log on using the green button. If damage is reported, the supervisor can disable the truck using a 'vehicle off road' (VOR) Smart Card, so that other authorised operators can not access the truck.

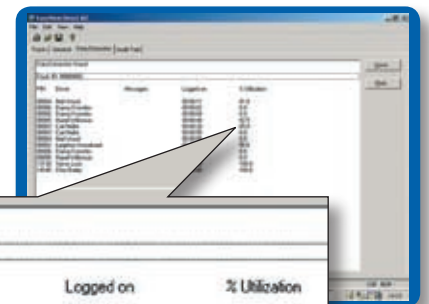


SYSTEM EXPANSION

ACCESS CONTROL PLUS (Smart Card access only)

This system has all the features of Smart Card Access Control, with the addition of a shock sensor assembly integrated in to the truck itself.

If the shock sensor registers a shock exceeding a preset threshold, it can activate an audible or visual alarm. On some manufacturers trucks, if preferred, the sensor can immobilise the truck until a supervisor checks and resets it.



DATA RETRIEVAL

Access Control Plus can be expanded to include basic **Administration Software**.

Data can be retrieved from the truck-mounted control module using a Smart Card or Data Retrieval Wand.

The extracted data can then be downloaded onto a computer installed with the Administration Software.

| Data Extraction Wand | | | | |
|----------------------|-------------------|----------|-----------|---------------|
| Truck ID: 00000002 | | | | |
| PIN | Driver | Messages | Logged on | % Utilization |
| 00004 | Neil Wood | | 00:00:11 | 81.8 |
| 00005 | Danny Knowles | | 00:00:02 | 0.0 |
| 00005 | Danny Knowles | | 00:00:04 | 0.0 |
| 00005 | Hazel Wilkinson | | 00:00:40 | 92.5 |
| 00003 | Carl Mellor | | 00:00:20 | 65.0 |
| 00003 | Carl Mellor | | 00:00:05 | 0.0 |
| 00004 | Neil Wood | | 00:00:08 | 0.0 |
| 00002 | Leighton Woodward | | 00:00:09 | 55.6 |
| 00005 | Danny Knowles | | 00:00:05 | 0.0 |
| 00005 | Hazel Wilkinson | | 00:00:06 | 0.0 |
| 13130 | Steve Lock | | 03:38:50 | 100.0 |
| 14140 | Chris Bailey | | 03:55:40 | 100.0 |



This allows supervisors to:

- Monitor utilisation and safe driving
- Issue Smart Cards and key fobs
- Check most recent drivers list for each truck
- Analyse Damage/No Damage log ons
- Acknowledge registered impacts above a preset threshold

Other TruckLOG® modules:

- Fleet Management Information System
- Forward/Reverse Inhibiting
- Speed Limiting
- Speed Zoning

To find out more about TruckLOG® Systems, call Customer Services on +44 (0)1332 227517



Davis Derby Limited
Chequers Lane · Derby · England · DE21 6AW
Telephone +44 (0)1332 227517 · Fax +44 (0)1332 372149
E-mail: trucklog@davisderby.com · Website: www.davisderby.com



Davis Derby is a world leader in the design, manufacture and installation of fork lift truck access control and fleet management systems